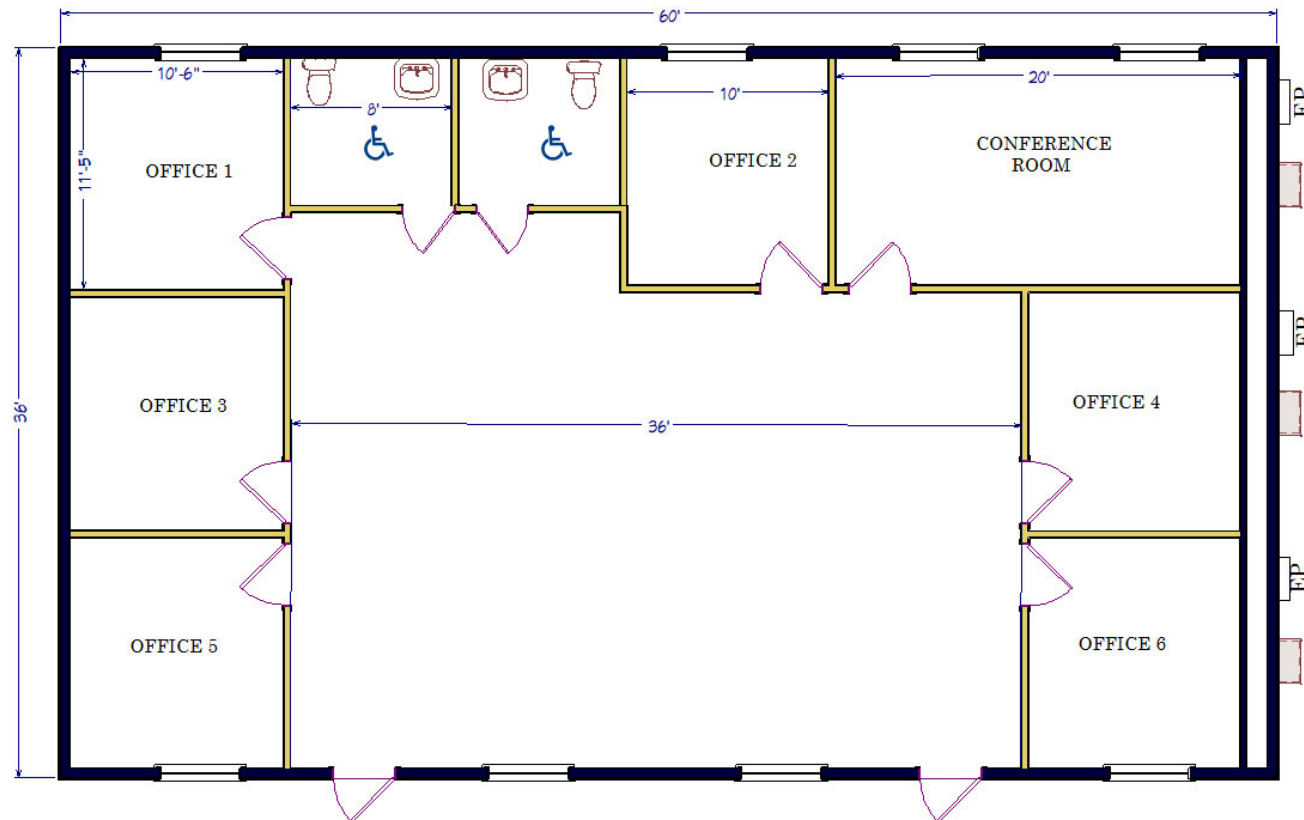




FEATURES

- 2,160 square feet of open office space provides generous office space for up to 18 people.
- Our buildings are completely insulated and come with a heating and aircondition system to provide a comfortable environment.
- Commercial Carpet for quite and productive office
- Upgraded interior wall coverings and decorative wood siding provide a professional appearance.
- Accoustical Sound Dampening Ceiling Tiles
- Electrical Sub Panel Box are 125 Amp, 220 Volt (per Section) in most cases.
Confirm with your local sales representative



Note: Renderings, specifications, and floor plans are representational only. Dimensions, doors, and windows shown are nominal. Actual dimensions, layout, and roof slope may vary depending on model year selected.

Call Your Local
Sales Professional

833.422.8333

36' x 60' Mobile Office Building
6 Offices, 1 Conference Room, & 2 Restrooms

